

Fall Start Date: VARIES on COURSE

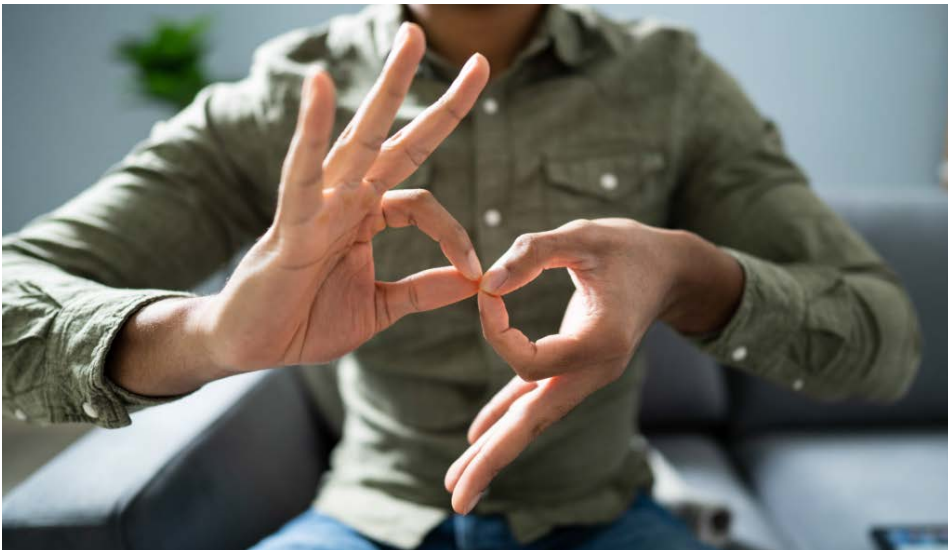
Fall End Date: Friday January 21, 2023

Note: Synchronous/Asynchronous attendance means live classes are recorded/posted on D2L for students unable to regularly attend class.

Note 2: Time slots **may also** be altered based on student availability and teacher's ability to adjust scheduling.

Course	Instructor	Scheduled Days	Time Slots (<i>Draft</i>)	Description
American Sign Language Orientation Sep. 20! Reg. Start - Sep. 27, 2022	Jan McCarthy Megan Cowan (Tech) jan.mccarthy@lakelandcollege.ca megan.cowan@ecacs16.ab.ca	Tuesday - Group A Tuesday - Group B *Students will be notified of their group selection.	6:00 - 7:30 pm 7:30 - 9:00 pm	Blended - Students work through the material and meet with the instructor the week following.
Basic Energy Principles Start Date - Sept. 21, 2022	Rick Roberts rick.roberts@ecacs16.ab.ca	Tuesdays / Wednesday / Thursdays - days flexible	1:00 - 1:40 pm	Synchronous / Asynchronous attendance
Hairstyling Start Date - Sep. 21, 2022	Daphne Thompson Daphnethompson737@gmail.com	email anytime Monday through Thursday	TBA	Synchronous / Asynchronous attendance
Introduction to Esthetics Start Date - Sep. 21, 2022	Lori Becher lori.becher@ecacs16.ab.ca	Monday through Thursday	9:00 - 9:40 am	Synchronous / Asynchronous attendance
Intro to Heavy Oil and Gas No designated Start or End Date	Rick Roberts rick.roberts@ecacs16.ab.ca	No Live Lessons	N/A	Asynchronous - students work through online content at own pace
Play Start Date - Sep. 21, 2022	Shauna Krismer shauna.krismer@lakelandcollege.ca	Tuesday through Thursday	10:30 - 11:10 am	Synchronous / Asynchronous attendance
Health Nutrition & Safety Start Date - Sep. 21, 2022	Karen Wiltse Karen.Wiltse@ic.desire2learn.com	Email anytime, Office hours for help sessions TBA	N/A	Recorded lessons at own pace Synchronous help available / Asynchronous attendance

*****Course offerings are subject to student numbers. PLEASE REGISTER STUDENTS ASAP! We would like to encourage a registration deadline of 1 week prior to the start of the class - in order to accommodate contracts to instructors - but will still accept registrations for 2 weeks past the deadline! Remember - there is a \$0 cost to the student or School Division!**



East Central Catholic Dual Credit Programs



ECACS in partnership with Lakeland College are excited to offer Dual Credit

The Dual-Credit initiative promotes the offering of dual credit courses for high school students. A dual credit course is a college course taken by a high school student that earns both college and high school credit at the same time.

https://soh.ecacs.ca/programs/Dual_Credit

Phone: 780-853-2188

Email: michel.despins@ecacs16.ab.ca

East Central Catholic Lakeland College



How do students enroll in the dual credit programs?

Students will register with the School of Hope as a non-primary student. Access to dual credit courses will be provided through Distance Education program delivery models. The registration of students under the non-primary distance education delivery model will have no financial impact on the primary block funding provided for each student. Reference the Alberta Education Funding manual under the Distance Education for Non-Primary Regulations.

https://soh.ecacs.ca/programs/Dual_Credit



How many courses can the student enrol?

Students can register as a non-primary student at the School of Hope and enrol in up to **two distance education Dual Credit courses per academic year.**

Classes will be delivered both synchronously and asynchronously depending on the course. All classes will be recorded and posted daily. Students can choose to attend the live classes Monday-Thursday or review the recordings at a later date. Course work deadlines will be outlined in the course syllabus for each course.

https://soh.ecacs.ca/programs/Dual_Credit



What costs are involved with students enrolling in the dual credit program?

There are no costs involved in enrolling in the distance education dual credit programs. The School of Hope will be providing the recommended course textbooks; however, all school divisions are encouraged to provide their students with the textbooks if the school division already has the resources on site.

https://soh.ecacs.ca/programs/Dual_Credit

East Central Catholic Lakeland College



American Sign Language I Part A

Introduction to American Sign Language (ASL), culture, and the community of Deaf persons who use this language. Learn how to have basic conversations, as well as use appropriate behaviours with the Deaf culture

Lakeland credit: ASL 101 (3 credits)

PSI 3214 (5 credits)

https://soh.ecacs.ca/programs/Dual_Credit



SCAN ME



Play

Play is a course in the ELCC and CYC programs at Lakeland College. Students will explore the significance of play in the development of children.

Lakeland credit: ED120 (3 credits)

PSI 3075 (5 credits)

https://soh.ecacs.ca/programs/Dual_Credit



SCAN ME



Basic Energy Principles

A prerequisite course to all other courses in the Renewable Energy & Conservation certificate & diploma programs; this course provides students with an understanding of principles of energy systems including electricity, heat, energy movement and water flow.

Lakeland credit: RC200 (3 credits)

PSI 3220 (5 credits)

https://soh.ecacs.ca/programs/Dual_Credit



SCAN ME

East Central Catholic Lakeland College



Hair Styling

This course provides the student with an overview of the requirements of a safe working environment in which to practice hairstyling.

Lakeland credit: ST130 (1credit)

HSA 3900, 3406, 3411 (3 credits)

https://soh.ecacs.ca/programs/Dual_Credit



SCAN ME



Introduction To Aesthetics

This course will provide students with an overview of safe practices in the workplace regarding bacteriology and sanitation. Students will learn to formulate a professional image and practice skills needed to work with the public.

Lakeland credit: HS160 (3 credits)

PSI 3072 (3 credits)

https://soh.ecacs.ca/programs/Dual_Credit



SCAN ME



Heavy Oil & Gas

This non-credit course will explain what heavy oil is and ways heavy oil is produced as well as explore the steps involved in getting heavy oil and natural gas out of the ground and into the marketplace. Non-credit course at Lakeland College – students will receive a completion certificate.

PRS 1020, PRS2020 & PRS2030 (3 credits)

https://soh.ecacs.ca/programs/Dual_Credit



SCAN ME

East Central Catholic Lakeland College



Health, Nutrition & Safety

This is a required course in Early Learning & Child Care certificate and diploma programs at Lakeland College. It focuses on the health services foundation with exploration of a child's nutritional and wellness choices.

Lakeland credit: HE158 (3 credits)

PSI 3074 (5 credits)



SCAN ME



Further Information:

Vice Principal - Michel Despins

School Of Hope - East Central Alberta
Catholic Schools

Phone: 780-853-2188

Email: michel.despins@ecacs16.ab.ca

Dean Of Health, Wellness & Human
Services - Janice Aughey

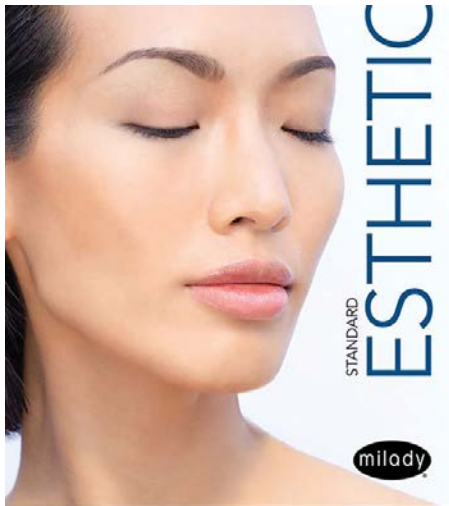
Lakeland College

Phone: 780-853-8460

Email: dualcredit@lakelandcollege.ca

https://soh.ecacs.ca/programs/Dual_Credit

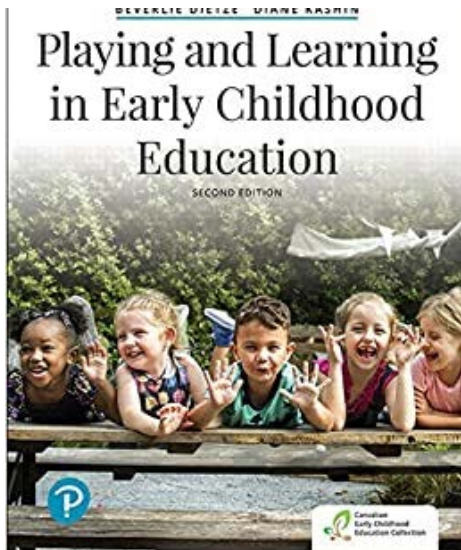
East Central Catholic Lakeland College



Esthetics Textbook Resource

Esthetics: Milady Standard Esthetics: Fundamentals 11th edition,
ISBN-13:978-1-111-30689-2

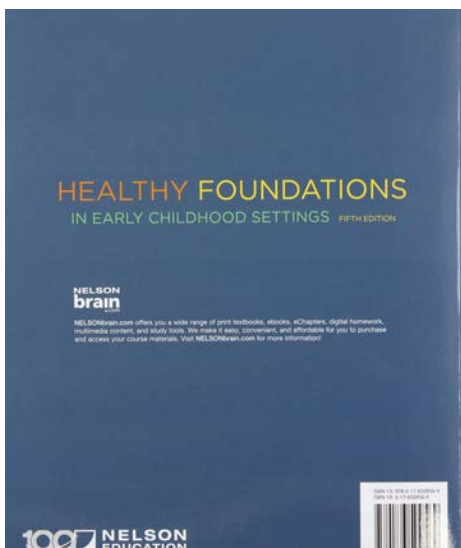
https://soh.ecacs.ca/programs/Dual_Credit



Play & Learning in Early Childhood Education Textbook Resource

Play: Playing and Learning in Early Childhood Education second edition
ISBN-978-0-13-463927-7

https://soh.ecacs.ca/programs/Dual_Credit



Health, Nutrition & Safety: Healthy Foundations in Early Childhood Textbook Resource

Health Nutrition and Safety: Healthy Foundations in Early Childhood
Settings 5th edition, ISBN-13-978-0-17-650956-9

https://soh.ecacs.ca/programs/Dual_Credit

East Central Catholic Lakeland College



MILADY®



Hairstyling Textbook Resource

Hairstyling: MILADY STD CSOMO TEXT, 13th ED.

https://soh.ecacs.ca/programs/Dual_Credit

Technical Requirements

The courses are offered through D2L, a Learning Management System (LMS). Each student's device will require:

- Access to broadband Internet
- Webcam or video conferencing camera (Zoom - Google Meet)
- Web browser (Chrome, Firefox, Microsoft Edge)
- Word processing software (Office, Google Apps)

school of



Further Information:

Vice Principal - Michel Despins

School Of Hope - East Central Alberta
Catholic Schools

Phone: 780-853-2188

Email: michel.despins@ecacs16.ab.ca

Dean Of Health, Wellness & Human
Services - Janice Aughey

Lakeland College

Phone: 780-853-8460

Email: dualcredit@lakelandcollege.ca

https://soh.ecacs.ca/programs/Dual_Credit